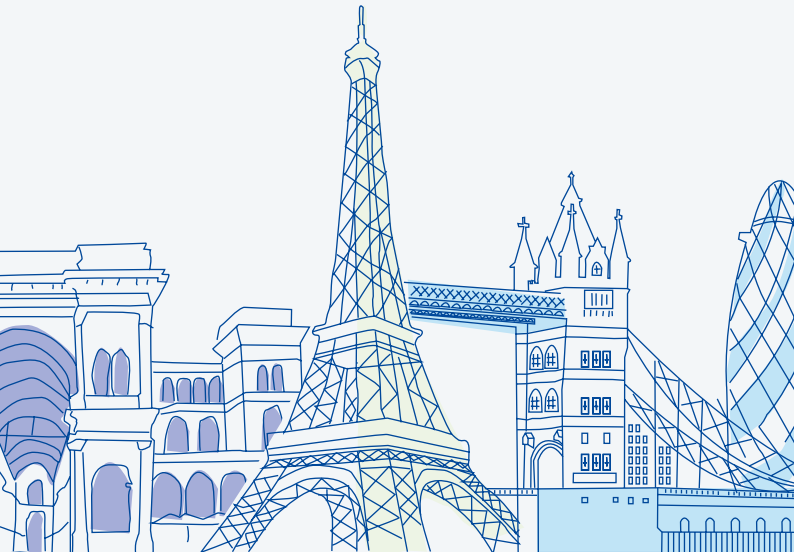


**INREV**

# Pocket Calendar 2020

INREV events, training and publications



JAN - DEC 2020

**INREV**

## Welcome

INREV is the European Association for Investors in Non-Listed Real Estate Vehicles. We are Europe's leading platform for sharing knowledge on the non-listed real estate industry. It is our goal to improve transparency, professionalism and best practice across the sector, making the asset class more accessible and attractive to investors.

This calendar is a one-stop point of reference for all INREV events, trainings and publications for 2020.

Please don't forget to check [inrev.org](http://inrev.org) for the most up-to-date information.

## Key

-  Event
-  Training
-  Research
-  Market Information

# January

<b>08</b> WED	Global Real Estate Fund Index Q3 2019 <i>inrev.org</i>	<b>21</b> TUE	Investment Intentions Roadshow <i>Amsterdam</i>
<b>15</b> WED	Investment Intentions Survey <i>inrev.org</i>	<b>23</b> THU	Investment Intentions Roadshow <i>Frankfurt</i>
<b>16</b> THU	Investment Intentions Roadshow <i>London</i>	<b>28</b> TUE	Investment Intentions Roadshow <i>Helsinki</i>
<b>16</b> THU	Fund Valuation and Reporting <i>London</i>		

-  Event
-  Training
-  Research
-  Market Information

## February

<b>04</b> TUE	Young Professionals Link and Learn <i>Amsterdam</i>	<b>13</b> THU	Effective Due Dilligence <i>Munich</i>
<b>06</b> THU	Young Professionals Link and Learn <i>London</i>	<b>26</b> WED	INREV Quarterly Index Q4 2019 <i>inrev.org</i>
<b>12</b> WED	Young Professionals Link and Learn <i>Frankfurt</i>	<b>26</b> WED	ODCE Quarterly Index Q4 2019 <i>inrev.org</i>

## March

<b>04</b> WED	German Vehicles Index Q4 2019 <i>inrev.org</i>	<b>11</b> WED	Asset Level Index Q4 2019 <i>inrev.org</i>
<b>05</b> THU	Debt Financing for Non-Listed RE <i>Amsterdam</i>	<b>18</b> WED	Portfolio Construction <i>Barcelona</i>
<b>11</b> WED	Cannes Seminar <i>Cannes</i>	<b>18</b> WED	IRR Quarterly Index Q4 2019 <i>inrev.org</i>
<b>11</b> WED	INREV Vehicles Universe Q4 2019 <i>inrev.org</i>	<b>25</b> WED	Global Real Estate Fund Index Q4 2019 <i>inrev.org</i>

■ Event   ■ Training   ■ Research   ■ Market Information

■ Event   ■ Training   ■ Research   ■ Market Information

# April

<b>01 02</b> WED	Foundation Course <i>Berlin</i>	<b>22 23</b> WED	Annual Conference <i>Athens</i>
<b>16</b> THU	Fundamentals of Fund Structuring <i>Luxembourg</i>	<b>22</b> WED	Capital Raising Survey <i>inrev.org</i>
<b>21</b> TUE	Investor Only Seminar <i>Athens</i>	<b>29</b> WED	INREV Annual Index 2020 <i>inrev.org</i>
<b>21</b> TUE	Annual General Meeting <i>Athens</i>	<b>29</b> WED	ODCE Annual Index 2020 <i>inrev.org</i>

# May

<b>06</b> WED	German Annual Index 2020 <i>inrev.org</i>	<b>13</b> WED	Fund Manager Survey <i>inrev.org</i>
<b>07</b> THU	Portfolio Management <i>London</i>	<b>27</b> WED	INREV Quarterly Index Q1 2020 <i>inrev.org</i>
<b>13</b> WED	IRR Annual Index 2020 <i>inrev.org</i>	<b>27</b> WED	ODCE Quarterly Index Q1 2020 <i>inrev.org</i>

■ Event   ■ Training   ■ Research   ■ Market Information

■ Event   ■ Training   ■ Research   ■ Market Information

## June

<b>03</b> WED	German Vehicles Index Q1 2020 <i>inrev.org</i>	<b>10</b> WED	Asset Level Index Q1 2020 <i>inrev.org</i>
<b>04</b> THU	Investor Relations and Communication <i>Madrid</i>	<b>17</b> WED	IRR Quarterly Index Q1 2020 <i>inrev.org</i>
<b>09</b> TUE	German Vehicles Index Seminar <i>Frankfurt</i>	<b>24</b> WED	Global Real Estate Fund Index Q1 2020 <i>inrev.org</i>
<b>10</b> WED	INREV Vehicles Universe Q1 2020 <i>inrev.org</i>	<b>30</b> TUE	Innovation and Digital Transformation <i>(by invitation only)</i> <i>London</i>

## July

<b>02</b> <b>03</b> THU	Young Professionals Conference <i>Berlin</i>	<b>15</b> WED	Funds of Funds Study <i>inrev.org</i>
-------------------------------	---	------------------	--

## August

<b>26</b> WED	INREV Quarterly Index Q2 2020 <i>inrev.org</i>	<b>26</b> WED	ODCE Quarterly Index Q2 2020 <i>inrev.org</i>
------------------	---	------------------	--

■ Event   ■ Training   ■ Research   ■ Market Information

■ Event   ■ Training   ■ Research   ■ Market Information

# September

<b>02</b> WED	Funds Termination Study <i>inrev.org</i>	<b>09</b> WED	INREV Vehicles Universe Q2 2020 <i>inrev.org</i>
<b>02</b> WED	German Vehicles Index Q2 2020 <i>inrev.org</i>	<b>10</b> THU	Young Professionals Link and Learn <i>London</i>
<b>03</b> THU	Young Professionals Link and Learn <i>Germany (City TBC)</i>	<b>16</b> WED	IRR Quarterly Index Q2 2020 <i>inrev.org</i>
<b>09</b> WED	ESG for Non-listed RE Investment <i>Paris</i>	<b>16</b> WED	Management Fees and Terms Study <i>inrev.org</i>
<b>09</b> WED	Asset Level Index Q2 2020 <i>inrev.org</i>	<b>17</b> THU	Young Professionals Link and Learn <i>Netherlands (City TBC)</i>

<b>23</b> WED	Global Real Estate Fund Index Q2 2020 <i>inrev.org</i>	<b>24</b> THU	Young Professionals Link and Learn <i>Nordics (City TBC)</i>
<b>23</b> WED	Risk Management for Non-Listed RE Investment <i>Amsterdam</i>	<b>30</b> WED	North American Conference <i>New York</i>

■ Event
 ■ Training
 ■ Research
 ■ Market Information

■ Event
 ■ Training
 ■ Research
 ■ Market Information

## October

<b>06</b> TUE	EXPO REAL Breakfast <i>Munich</i>	<b>28</b> WED	Investing in Joint Ventures and Club Deals <i>Frankfurt</i>
<b>07</b> WED	Global Investor Index 2020 <i>inrev.org</i>	<b>28</b> WED	North American Conference <i>New York</i>
<b>14</b> WED	Debt Funds Universe 2020 <i>inrev.org</i>		

## November

<b>04</b> WED	Advanced Tax Round Table <i>London</i>	<b>25</b> WED	INREV Quarterly Index Q3 2020 <i>inrev.org</i>
<b>05</b> THU	Technology Round Table <i>London</i>	<b>25</b> WED	ODCE Quarterly Index Q3 2020 <i>inrev.org</i>
<b>11</b> WED	Advanced NAV <i>Amsterdam</i>	<b>26</b> THU	Performance Measurement <i>Copenhagen</i>
<b>19</b> THU	Autumn Conference <i>Copenhagen</i>		

■ Event   ■ Training   ■ Research   ■ Market Information

■ Event   ■ Training   ■ Research   ■ Market Information

# December

<b>02</b> WED	German Vehicles Index Q3 2020 <i>inrev.org</i>	<b>09</b> WED	INREV Vehicles Universe Q3 2020 <i>inrev.org</i>
<b>02</b> WED	Young Professionals Christmas Drinks <i>London</i>	<b>10</b> THU	Liquidity Issues and Pricing <i>London</i>
<b>09</b> WED	Young Professionals Christmas Drinks <i>Amsterdam</i>	<b>16</b> WED	IRR Quarterly Index Q3 2020 <i>inrev.org</i>
<b>09</b> WED	Asset Level Index Q3 2020 <i>inrev.org</i>		

## Briefings

INREV offers an array of briefings tackling key industry tax and regulatory issues as well as giving deeper insights into the latest INREV research and analytics projects.

**More info available under the Research and the Tax and Regulations section at [inrev.org](https://www.inrev.org)**

## eLearning

INREV now offers an integrated eLearning platform covering a broad range of topics for greater accessibility and ease of broadening your industry knowledge and expertise.

**More info available at [inrev.org](https://www.inrev.org)**

## INREV/Henley Certificate

INREV and Henley Business School have come together to offer the INREV/Henley Certificate in European non-listed real estate investment. Sign up, take the relevant courses and qualify with an academically recognised certification.

**More info available at [inrev.org/certificate](https://www.inrev.org/certificate)**

 Event  Training  Research  Market Information



[research@inrev.org](mailto:research@inrev.org)



[events@inrev.org](mailto:events@inrev.org)



[training@inrev.org](mailto:training@inrev.org)



[inrev.org](http://inrev.org)

