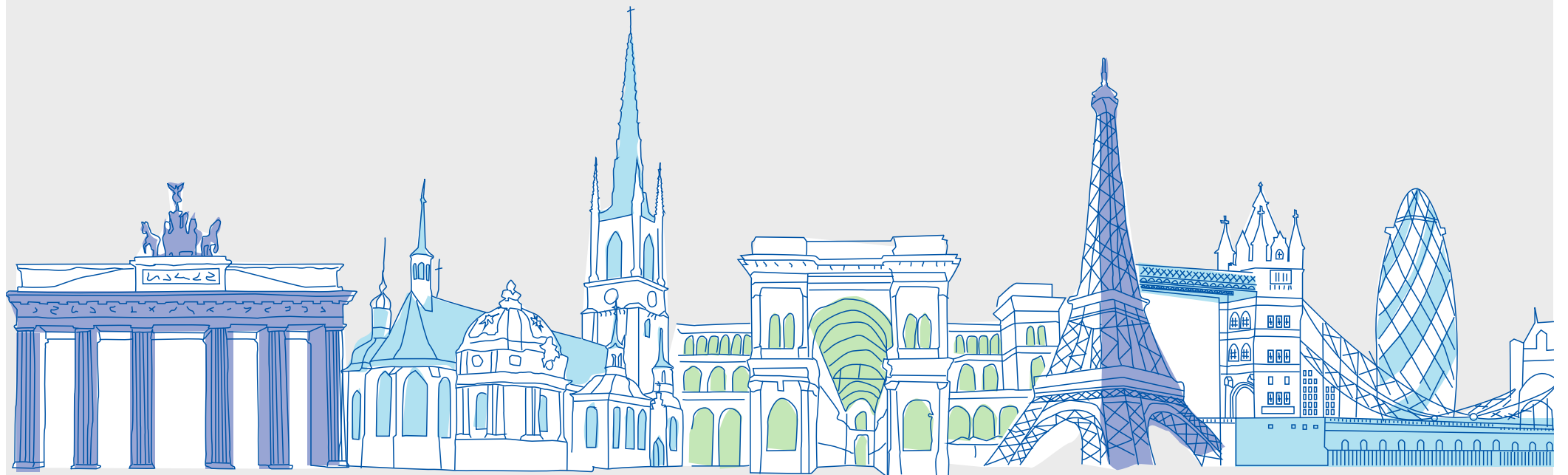


Annual Conference 2020

Online



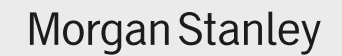


Sponsors

Headline



Support





Programme

Day 1, Tuesday 29 September 2020

Business interrupted: Building resilience for the new norm



11:00 CET

Welcome

Lonneke Löwik, CEO, INREV

11:10 CET

Opening remarks

Greg Clark, Conference Moderator

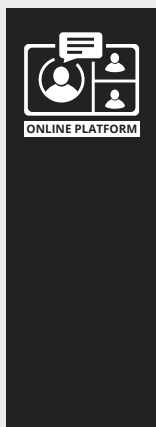
11:20 CET

The global economic and geopolitical impact of COVID-19

Keynote speech by Yanis Varoufakis, Economist, former Minister of Finance of Greece

12:00 CET

End of livestream



12:15 CET

Join the headline sponsors in their virtual booths

- **Building Tomorrow: Development strategies that stand the test of time**
Hosted by AXA Investment Managers – Real Assets
- **Offices and remote working: the game changer or a bump on the road?**
Hosted by Generali Real Estate
- **Logistics Real Estate in the Era of COVID-19: Lessons learned and long-term impacts**
Hosted by Prologis
- **The opportunity in alternatives in a risk-off environment**
Hosted by M&G Investments

13:00 CET

End



Programme

Day 1, Tuesday 29 September 2020



14:00 CET

Welcome back

Greg Clark, Conference Moderator

14:10 CET

Sustainable finance: Leading a decade of action

Keynote speech by Lise Kingo, Independent Board Director, former CEO, United Nations Global Compact

14:45 CET

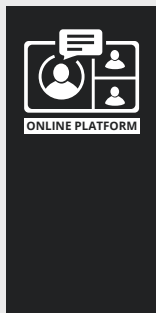
Investor outlook: Impact of COVID-19 crisis on real estate investments and allocations

Panel moderated by Greg Clark

- Karim Habra, Head of Europe and Asia-Pacific, Ivanhoé Cambridge
- Udo Schaffer, Vice President Real Estate, E.ON
- Hideto Yamada, Head of Global Real Estate, Co-head of Private Market Investments, GPIF

15:30 CET

End of livestream



15:45 CET

Roundtable break outs and networking

INREV break out sessions

- Diversity and Inclusion
- ESG
- Technology
- Young Professionals (open for members under the age of 35)

16:30 CET

End of conference day 1



Programme

Day 2, Wednesday 30 September 2020



13:00 CET

Welcome remarks

Greg Clark, Conference Moderator

13:10 CET

Will COVID-19 further fuel increased geopolitical tensions?

Keynote speech by Bernard Kouchner, former French Foreign Secretary and UN Special Representative for Kosovo, Co-founder of Doctors Without Borders

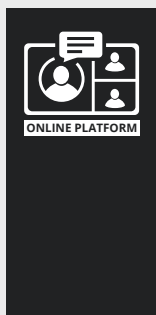
13:50 CET

Keynote interview: Adventures in property

Keith Breslauer, Managing Director and Senior Partner, Patron Capital Partners
Interviewed by Andrea Carpenter, Director, Women Talk Real Estate

14:20 CET

End of livestream



14:30 CET

Roundtable break outs and networking

Open house break outs

- Research and Market Information
- Professional Standards
- Public Affairs and Tax
- Global Alliance Initiatives

15:30 CET

End



Programme

Day 2, Wednesday 30 September 2020



16:00 CET

Welcome back

Greg Clark, Conference Moderator

16:10 CET

Bedding in: Finding value in residential

Presentation by Andrew Allen, Real Estate Investment Strategist followed by debate moderated by Greg Clark

- Patrick Kanters, Managing Director Global Real Estate & Infrastructure, APG Asset Management
- Anne Kavanagh, CIO , PATRIZIA
- Isabelle Scemama, Global Head, AXA IM Alts and CEO, AXA IM - Real Assets

17:00 CET

Close of the conference

Greg Clark



17:15 CET

Virtual cocktail party

18:00 CET

End



Contact

INREV

Hedda Hollander
hedda.hollander@inrev.org

Tom Vink
tom.vink@inrev.org