

Annual Conference 2021

20, 21 and 22 April – Online





Sponsors

Headline



Support



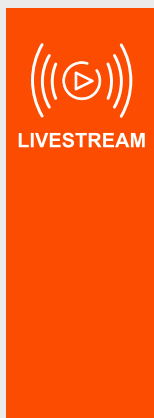


Programme

Day 1, Tuesday 20 April 2021

Reinvention for resilience: getting ready for the new normal

Taking stock: today's economic landscape



11:00 CET

Welcome

Lonneke Löwik, CEO, INREV

11:10 CET

Opening remarks

Greg Clark, Conference Moderator

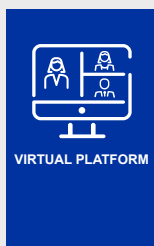
11:15 CET

Shot in the arm: economic recovery in a vaccinated world

Keynote presentation by Linda Yueh, Fellow in Economics, St Edmund Hall, Oxford University

12:00 CET

End of livestream



12:15 CET

Open house break outs

- Research and Market Information
- Professional Standards
- Public Affairs and Tax
- Global Alliance Initiatives

13:15 CET

End of open house break outs



Programme

Day 1, Tuesday 20 April 2021

The impact of COVID-19: moving from outbreak to long-term adaption



14:00 CET

Welcome back

Greg Clark

14:05 CET

Operating for success: sector picks amid structural change

Presentations followed by panel discussion moderated by Greg Clark

- **Retail:** Andrew Vaughan, CEO, Redevco
- **Office:** Bernard Penaud, Head of Europe, Tishman Speyer
- **Logistics:** Rob Wilkinson, CEO, AEW
- **Beds:** Cristina García-Peri, Senior Partner, Azora

15:00 CET

End of conference day 1

Greg Clark
Lonneke Löwik



Programme

Day 2, Wednesday 21 April 2021



10:00 CET	Welcome remarks Greg Clark Lonneke Löwik
10:05 CET	Heart of the matter: creating a customer centric approach Presentation by Jos Sentel, Manager Strategy and Research, Syntus Achmea Real Estate & Finance
10:30 CET	Rules of engagement: how to invest in emerging products Presentation by Ilkka Tomperi, Investment Director, Head of Real Estate, Varma
10:50 CET	Braving new business models: the realities of a service economy Panel discussion moderated by Greg Clark <ul style="list-style-type: none">• Mikkel Bülow-Lehnsby, Chairman and Co-Founder, NREP• Ilkka Tomperi, Investment Director, Head of Real Estate, Varma• John O'Driscoll, European Head of Transactions, Real Assets, AXA Investment Managers - Real Assets
11:30 CET	End of livestream
12:00 CET	Join the headline sponsors in their virtual booths <ul style="list-style-type: none">• Bouwinvest Real Estate Investors• Catella Residential Investment Management• Generali Real Estate• Prologis
12:45 CET	End of virtual booths



Programme

Day 2, Wednesday 21 April 2021



14:00 CET

Welcome back

Greg Clark
Lonneke Löwik

14:05 CET

Equal footing: how diverse is the non-listed real estate industry?

Keynote presentation by Serena Althaus, Senior Managing Director, Ferguson Partners

14:35 CET

Keynote interview: inspirational leadership through action

Ric Lewis, Executive Chairman and Chief Investment Officer, Tristan Capital Partners
Interviewed by Andrea Carpenter, Director, Women Talk Real Estate

15:15 CET

End of conference day 2

Greg Clark
Lonneke Löwik

15:30 CET

Virtual speed networking session

Meet up with other delegates for rotating five minute one-to-one meetings

16:00 CET

End

Building a sustainable inclusive industry



Programme

Day 3, Thursday 22 April 2021

Today's evolving institutional investing landscape



14:00 CET

Welcome remarks

Greg Clark
Lonneke Löwik

14:05 CET

Common traits: characteristics of non-listed real estate

Keynote presentation by Iryna Pylypchuk, Director of Research and Market Information, INREV

14:30 CET

Relative value: real estate's role in the wider portfolio

Panel discussion moderated by Greg Clark

- Jenny Buck, CIO, Tesco Pension Investment
- Timo Löyttyniemi, CEO, The State Pension Fund of Finland
- Jelle van der Giessen, CIO, NN Group



Programme

Day 3, Thursday 22 April 2021

Accelerating ESG through technology



15:15 CET

Core values: putting ESG at the heart of your business

Presentation by Guy Grainger, Global Head of Sustainability Services, JLL

15:40 CET

Greentech: innovation for ESG progress

Presentations followed by panel discussion moderated by Greg Clark

- Robert Laing, CEO, Farm.One
- Matt Ellis, Founder and CEO, Measurabl
- Guillaume Poitral, Cofounder, Woodeum & WO2 and Founding partner and Chairman, ICAMAP

16:25 CET

Indoor living: how healthy buildings can improve performance

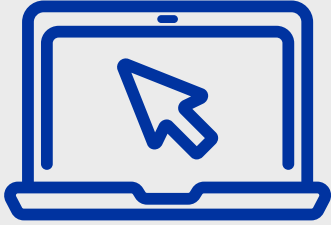
Keynote closing speech by John Macomber, Senior Lecturer of Business Administration, Harvard Business School

17:05 CET

Close of the conference

Greg Clark

Marieke van Kamp, Chair of the INREV Management Board, NN Group



Contact

INREV

Hedda Hollander
hedda.hollander@inrev.org

Tom Vink
tom.vink@inrev.org